

L-236 Bungalow

Great Heights for Magnificent Designs

Usually when faced with difficult situations, most designers would opt to take the easiest routes possible to create a convenient design. However, LNL chooses to turn a weakness in the land profile into an advantage to create a unique and spacious house for the Lau Family.



Fact Sheet

Project Name	L-236
Total Site Area	10,624 sq. ft.
Ground Floor Area	3,000 sq. ft.
Total Combined Floor Area	13,000 sq. ft.
Location	Country Heights Damansara, Kuala Lumpur
Construction Period	15 months
Client	Lau's Family
Design Architect	LNL Sdn. Bhd.
Interior Design	LNL Sdn. Bhd.
Project Manager	GLS Project Management Sdn. Bhd.
Civil & Structure engineer	B & L Engineer Sdn. Bhd.
Mechanical & Electrical engineer	Perunding Kejuruteraan AJW
Main Contractor	GLS Project Management Sdn. Bhd.



The major problems faced by the designers were the difficulty of access as there was no physical ground land from the road level. The sudden slope in the land profile caused the designers to really consider creating an access into the house and still making the house feel as comfortable as possible to accommodate the Lau family. However, while on one side the home is blocked by an elevated road level, the other end of the site opens itself towards the lush landscape.

While most of the openings of the house are located towards the open ended side of the site, a centre courtyard maximizes the air circulation of the spaces and allows even more sunlight to penetrate through the structure and provide light even to areas that are darkened by the slope. This allows the building to escape the corridor effect that many deep set buildings tend to have and eliminates the fact of an overshadowing slope that dominates the site on one side.





The courtyard is adorned with trees that reach up to the full four storey height of the building, creating a natural link between the floors. On the other hand, a light weight staircase constructed with steel plate and sandwiched with marble cantilevered from the lift cone adds the other link between each floor. This unique staircase continues the no fuss design that plays along each space. To further enhance the interaction between the spaces, the juxtaposition built forms a linkage of each space and thus aids the further enlightening and circulation of the spaces.

To blend with the amazing landscape that sits unwavering into the horizon, the designers added elevated gardens at different levels of the house. The gardens symbolize a minimal approach to blending with its greater ocean of greenery rather than overpowering it, allowing the occupants to feel a part of the environment and view in the comfort of their home.

When walking through the spaces, one realizes the language of simplicity portrayed by the exterior of the building is carried through the interior spaces to create simple white spaces that feel light and airy. Minimal use of materials and bare walls add to play along spaciousness of the building. Even the double volume living hall reaches out to the occupants and connects them to the space via a wooden line that unifies the ceiling to the walls.

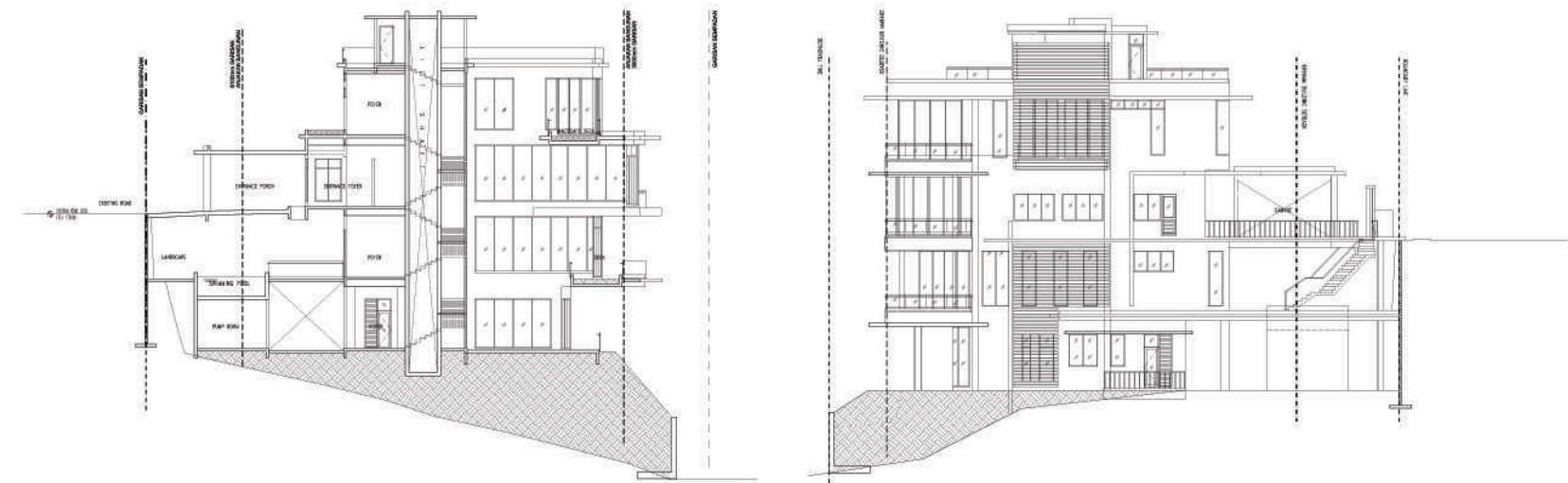


This idea of unification is also carried through in the indoor infinity pool effect created by the edgeless swimming pool on the lower ground level that seeks to connect its occupant again to their environment. The effect, possible via a piece of glass, leaves the impression that the occupant can swim out to the tall green trees in the view. This creates a relaxing effect that is complemented by the massage area next to the swimming pool. And, if the occupants are not in the mood to swim the lengths of the pool, a small wading pool accompanies it.

Another unique part of the house is the kitchen that uses a special design to turn an ordinary kitchen space to an extraordinary design. The custom made design uses one piece of solid surface which was a huge challenge to design. However, the after effect of the design truly brings character to the experience of cooking in a one of a kind kitchen.

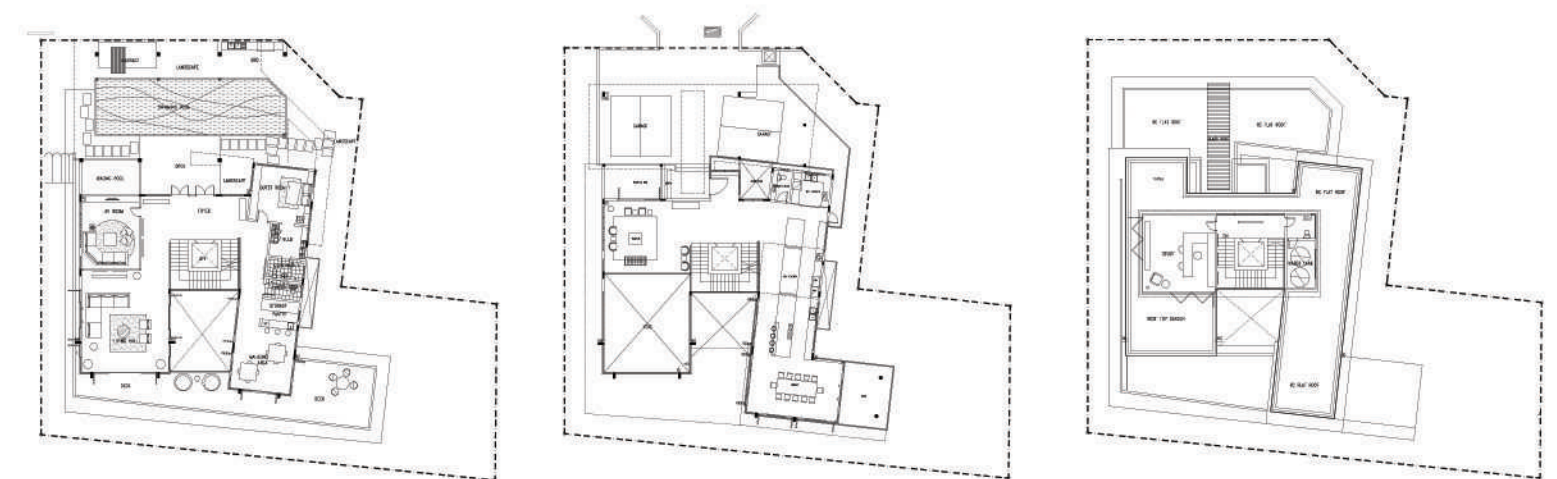
When looking at the whole design of this height defying house, it is quite natural to see the careful planning and subtle approach at creating a home like no other. 





Section Plan

Side Elevation Plan



Lower Ground Floor Plan

Ground Floor Plan

Second Floor Plan